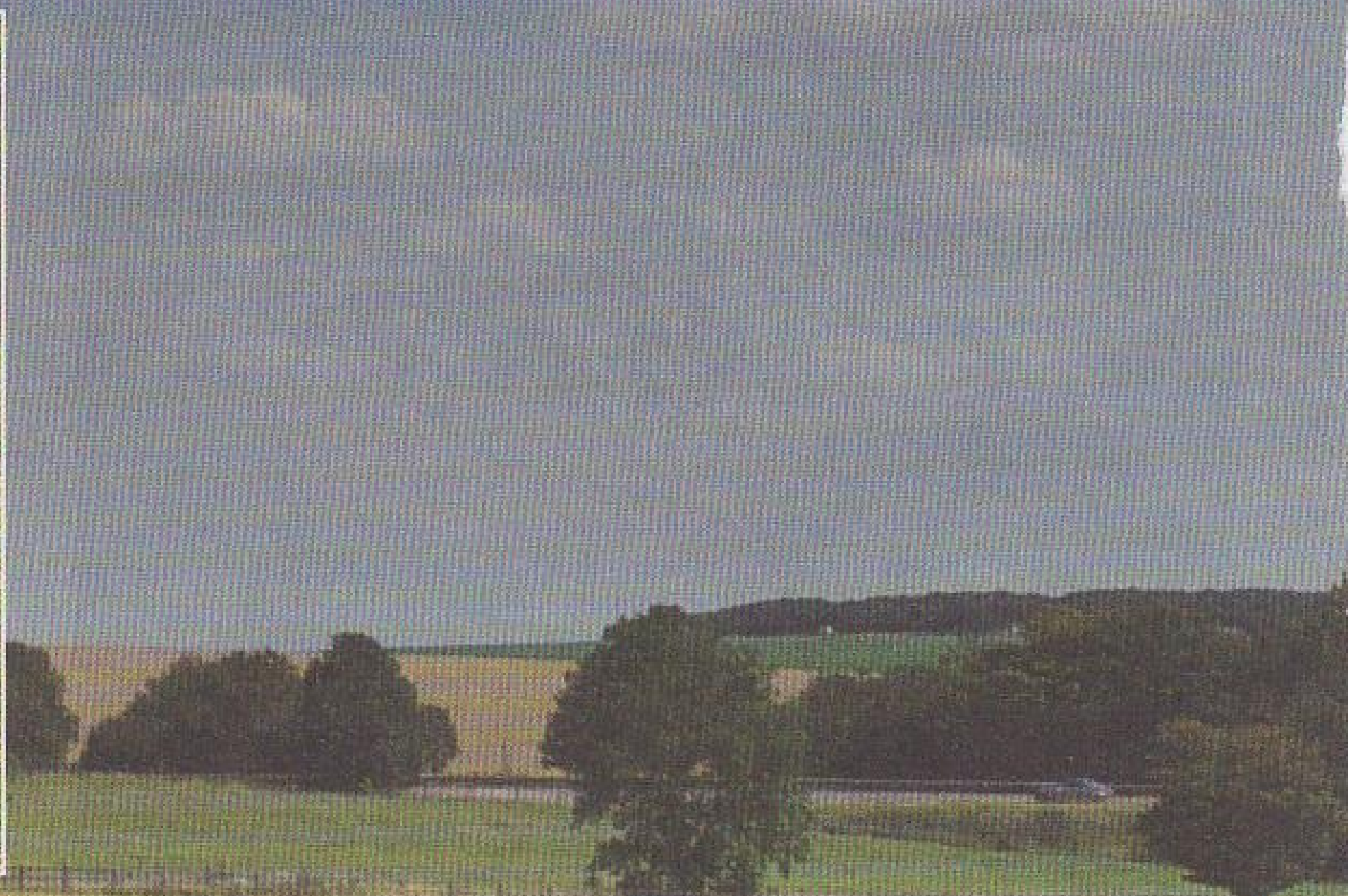
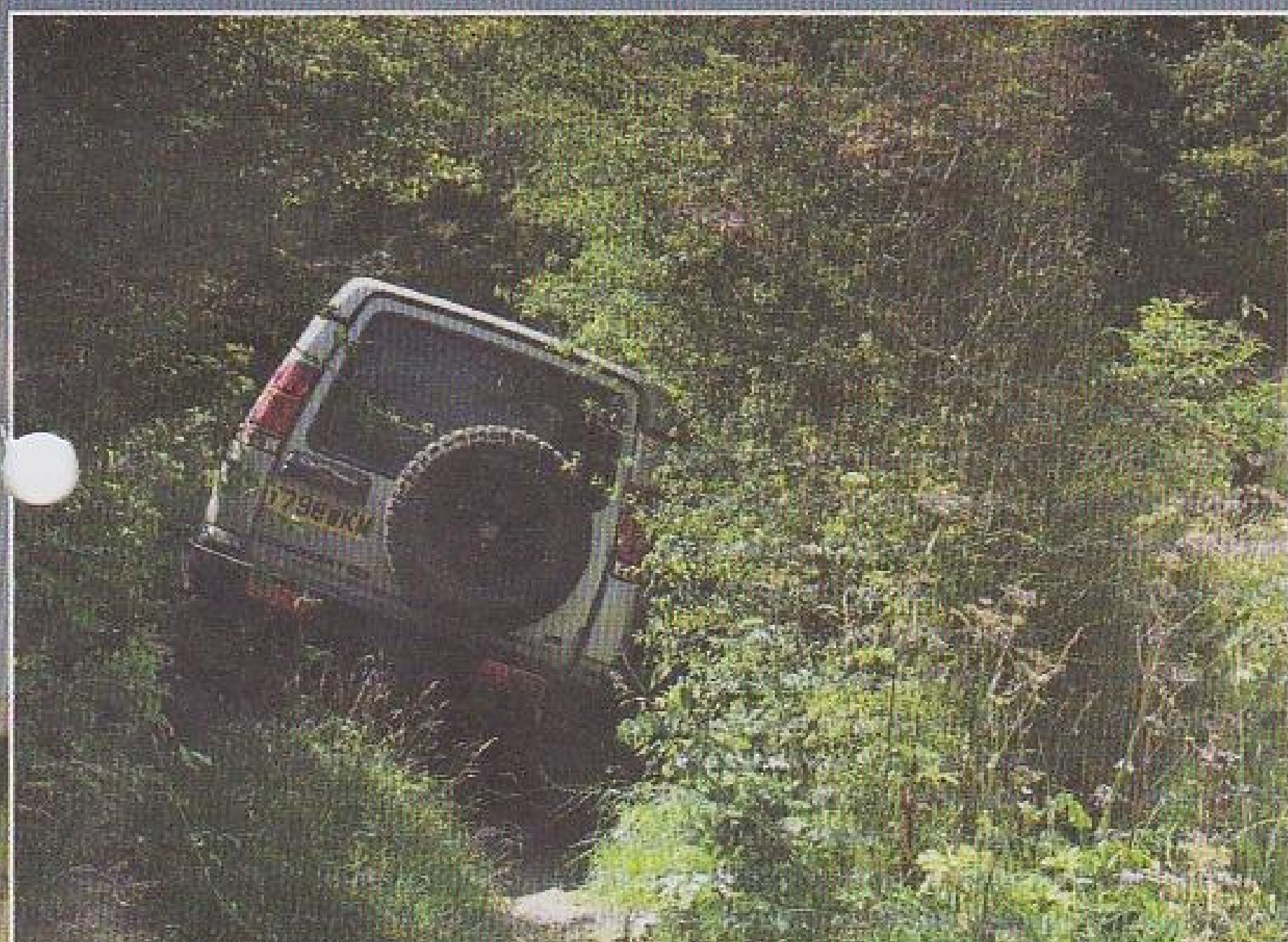


NORTH-WEST BERKS

The scenery's beautiful – and so are the lanes!

Starting in the shadow of the late, lamented Ridgeway, this route meanders its way west via the wide open expanses of the Lambourn Downs. Most of the time, you'll be on well surfaced farm tracks with sweeping views all around – but there's enough woodland driving too, some of it very tight, to keep you well and truly on your toes



1 0.0		SU 492 811 Start outside the Swan in East Ilsley, on the junction of High Street and Fidler's Lane. Zero your trip at the exit to the car park and turn left on to Fidler's Lane, heading west out of the village to start the route	5 2.0		
2 0.2		SU 489 812 Immediately after you've passed under the dual carriageway, there's a road junction on the left. The track you're looking for exits on the far side of it – be aware that if there are cars coming from the left and waiting to join your road, they'll obscure your view	6 2.1		Follow the byway sign
3 0.8		Take care here – there's a sharp side slope into the field on the right. After this, it starts getting quite tight between the trees	7 2.4		Follow the byway sign
4 1.9			8 2.8		ZERO TRIP

OUR DISCO

The Discovery we used for setting out this roadbook was built in association with **Extreme 4x4**. The company supplied a variety of its products including longer-travel suspension, heavy-duty bumpers and underbody protection, as well as a winch and snorkel. For more info, go to www.extreme4x4.co.uk or call 01255 411411

IS IT SUITABLE?

TYRES	All-terrains recommended
WEATHER	Slippery in places when wet
LOW BOX	Helpful in tight spots
SOFT-ROADERS	Just about suitable, with care
SCRATCHING	Highly likely, especially in summer
DRIVING	Extra care needed in places
DAMAGE	Some tightly wooded lanes

ROUTE GUIDE

START	East Ilsley (SU 492 811)
FINISH	Aldbourn (SU 264 756)
DISTANCE	37.75 miles
TIME	3-4 hours
TERRAIN	Rolling downs and woodland
HAZARDS	Moderate ruts; Other users
	Occasional side-slopes
	Tight, scratchy sections
OS MAPS	Landranger 174
	(Newbury and Wantage)
	Explorer 158 (Newbury and Hungerford)
	Explorer 170 (Abingdon, Wantage and Vale of White Horse)



9
0.6

SU 467 783

13
2.0

Stay on the main track

10
1.0

14
2.3

11
1.4

Join the main farm track for a short distance then, where a pair of signs inform you that there's no right of way, follow the byway sign into the trees

15
3.1

12
1.7

Rejoin the main farm track

16
3.3

Brightwalton



Step 9 (above): As you leave the road, a pointed reminder of your responsibilities. **Step 11 (right):** More signs, this time unhelpfully telling you that the road ahead is private – rather than pointing out that the right of way dives off into the woods on the right



17 4.1		SU 430 794
18 4.4		
19 4.9		
20 5.2		
21 5.5		
22 6.3		Brightwalton
23 6.7		SU 426 806
24 7.0		

USING OUR ROADBOOKS

Total Off-Road's unique roadbooks guide you through the British countryside on a mixture of surfaced and unsurfaced roads. The tracks we use are public rights of way, either Byways Open to All Traffic or Unclassified County Roads, all of them commonly referred to as green lanes.

NAVIGATION

We've deliberately made it as easy as possible to follow the route, using a mixture of instructions, tulip diagrams and grid references. We normally only include junctions at which you have to make a turning or don't have right of way, so just stay on the main road or take the most straight-ahead option unless we tell you otherwise.

If you're unfamiliar with six-figure grid references, you'll find a guide to using them on the legend of any OS map. Our aim is for you to be able to do the route without maps, but we do recommend having them.

SAFETY

The symbols on the first page of the roadbook advise you of how suitable it is for your vehicle. These are just guidelines, however. We'll warn you of any hazards or difficult sections, but the nature of any green lane can change quickly. Wet weather can make a huge difference to the conditions underfoot, and what's wide open in winter can be tightly enclosed and scratchy in summer. The responsibility is yours!

Our roadbooks are designed to be safe to drive in a solo vehicle, and are largely suitable for standard 4x4s on road tyres. We do recommend travelling in tandem wherever possible, however. The risk of getting stuck can be greater than it appears – and if you break down, having help at hand can make the difference between it being inconvenient and downright dangerous.

RESPONSIBILITY

Irresponsible driving is a massive problem on green lanes. In particular, you must always stay on the right of way. Never drive off it to play on the verges or surrounding land, even if you can see that someone else has; doing so is illegal and can be tremendously damaging, both to the land and to 4x4 drivers' reputation.

The fact that you can see where it's happened shows how much harm it does. It's no excuse to say you're just following where another driver has already been. Most green laners have taken to videoing anyone they see behaving like this and passing the evidence to the police, which shows how much anger there is towards the criminal element.

Elsewhere, simple common sense and courtesy should be your watchword. The do-and-don't list below should always be in your mind, but keep your speed down, be ready to pull over for others and make it your aim to show the world that 4x4 drivers aren't the hooligans they think we are.

ANTIS

Anti-4x4 bigotry does exist, but it's less common than you'd think. By and large, it's limited to organisations who just want to get the countryside all to themselves.

These organisations are beyond being reasoned with, but it's rare to encounter real hostility even from their rank-and-file members. If you're friendly towards the people with whom you share the countryside, the vast majority will respond in kind. There are always bad apples, but no more so than anywhere else.

Likewise, most local residents will accept your presence if you're driving sensibly. What suspicion you do encounter is likely to be from people worried that you're there to steal from them, so be ready to offer a word of reassurance. Once satisfied that you're not after their quad bikes, their mood will lighten.

It only takes one vandal to tarnish a person's view of all 4x4 drivers, and once the damage is done it tends to be permanent. But if enough of us resolve to be ambassadors, it might make a difference to the way we're perceived by society in general.

DO'S & DON'TS

- Keep your speed right down
- Pull over to let walkers, bikers and horse riders pass
- Don't travel in large convoys: split into smaller groups to avoid hassling others
- Leave gates as you found them
- Don't drop litter
- Don't go back to drive the fun bits, such as mud or fords, again
- Scrupulously obey all closure and voluntary restraint notices
- Don't cause a noise nuisance, particularly after dark
- Ensure you have a right to be there. We research the routes on our roadbooks very carefully, but the status of any route can change without notice
- Be prepared to turn back if the route is blocked, even illegally
- If you find an illegal obstruction, notify the local authority
- If someone challenges you, be firm but polite. Stay calm and don't get into a slagging match
- Stick absolutely scrupulously to the right of way
- You have as much of a right to be there as everyone else. Which of course means they have as much right as you

25 9.4		(M4) Hungerford A338 Great Shefford
26 11.5		East Garston 1 ³ / ₄ East Bury 2 ³ / ₄ Lambourne 4
27 12.4		SU 372 757 Turn into Maiden Court opposite the public footpath sign on the left
28 12.6		Follow on straight ahead through the farm buildings, keeping your speed and engine revs right down
29 13.6		Stay on the main track
30 14.5		ZERO TRIP
31 1.5		
32 1.9		Eastbury Lambourne 3 ⁴ / ₄ 2 ¹ / ₂
33 2.6		Eastbury Grange 1 ³ / ₄
34 4.5		SU 359 796 At the byway sign, follow the tyre tracks with the fence immediately to your right. You'll come to a three-way byway sign – again, keep on ahead
35 4.7		Don't turn too early – you'll see another byway signposted on the left a little before this. What you're looking for is a T-junction with a wooden pylon in front of you
36 4.8		
37 6.0		Turn left in front of the dark red barn ZERO TRIP
38 0.05		There's a concrete road ahead, with a much less obvious track to the left meandering along next to it, at first across the grass verge then between the tree line and field edge. There's no signposting to guide you; the correct route appears to be to follow the track, but we saw a farmer while using the surfaced road and he was happy for us to do so
39 1.1		
40 1.15		



41

1.3

47

3.6

This is immediately after the bridge

CORNEY STREET

42

1.35

48

3.7

43

1.6

Follow the main track round to the right in front of the white gallop fence

Step 34 (below):

The byway sign isn't very obvious as you cruise along the concrete road, but you need to keep an eye out for it. The right of way slides out to the right, more or less dead ahead on the grass

Step 36 (below):

Having negotiated some potentially tricky navigation just before this point, the route gets very clear indeed – you just follow it up the hill towards the enormous red barn

44

2.0

45

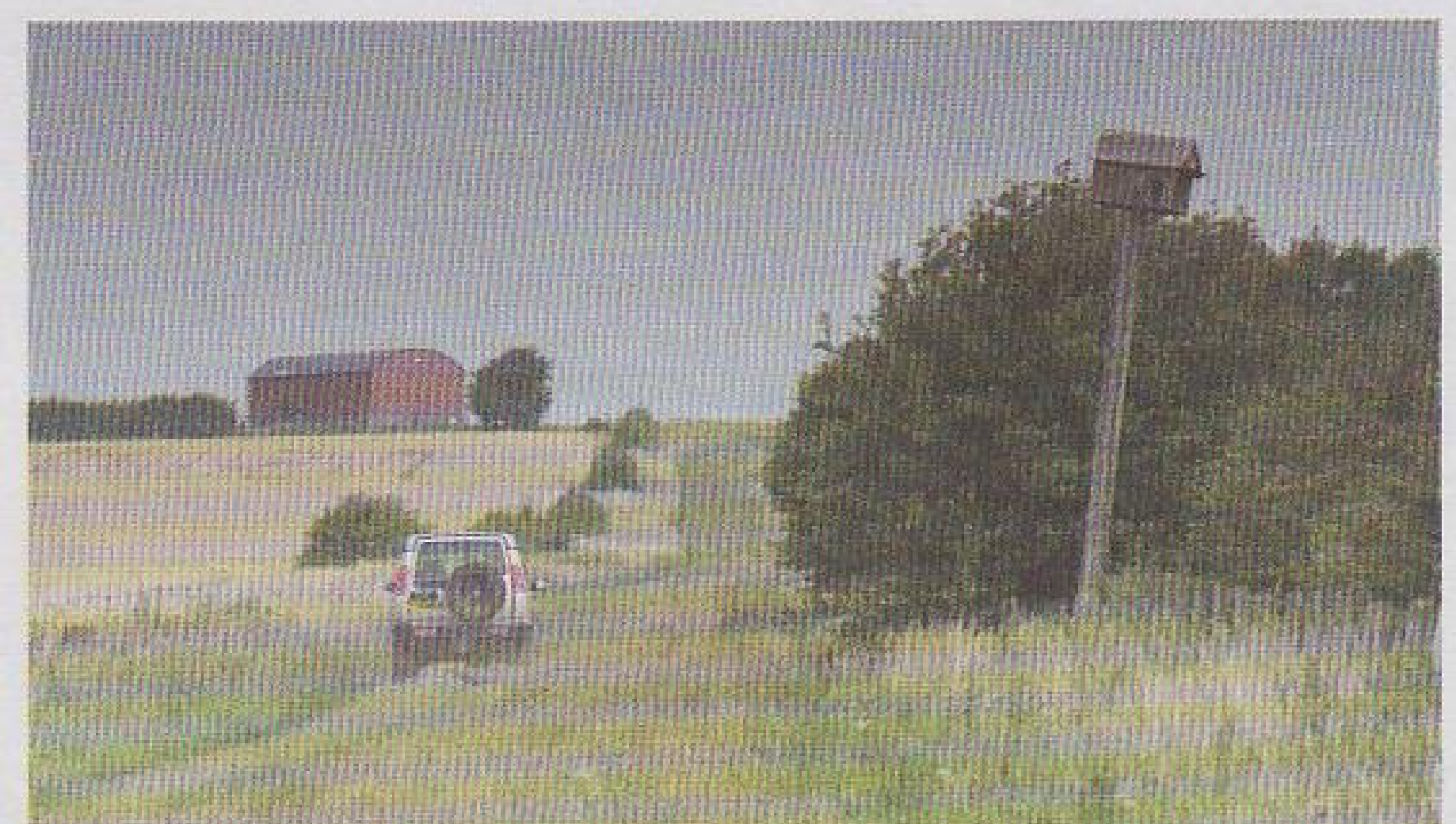
2.6

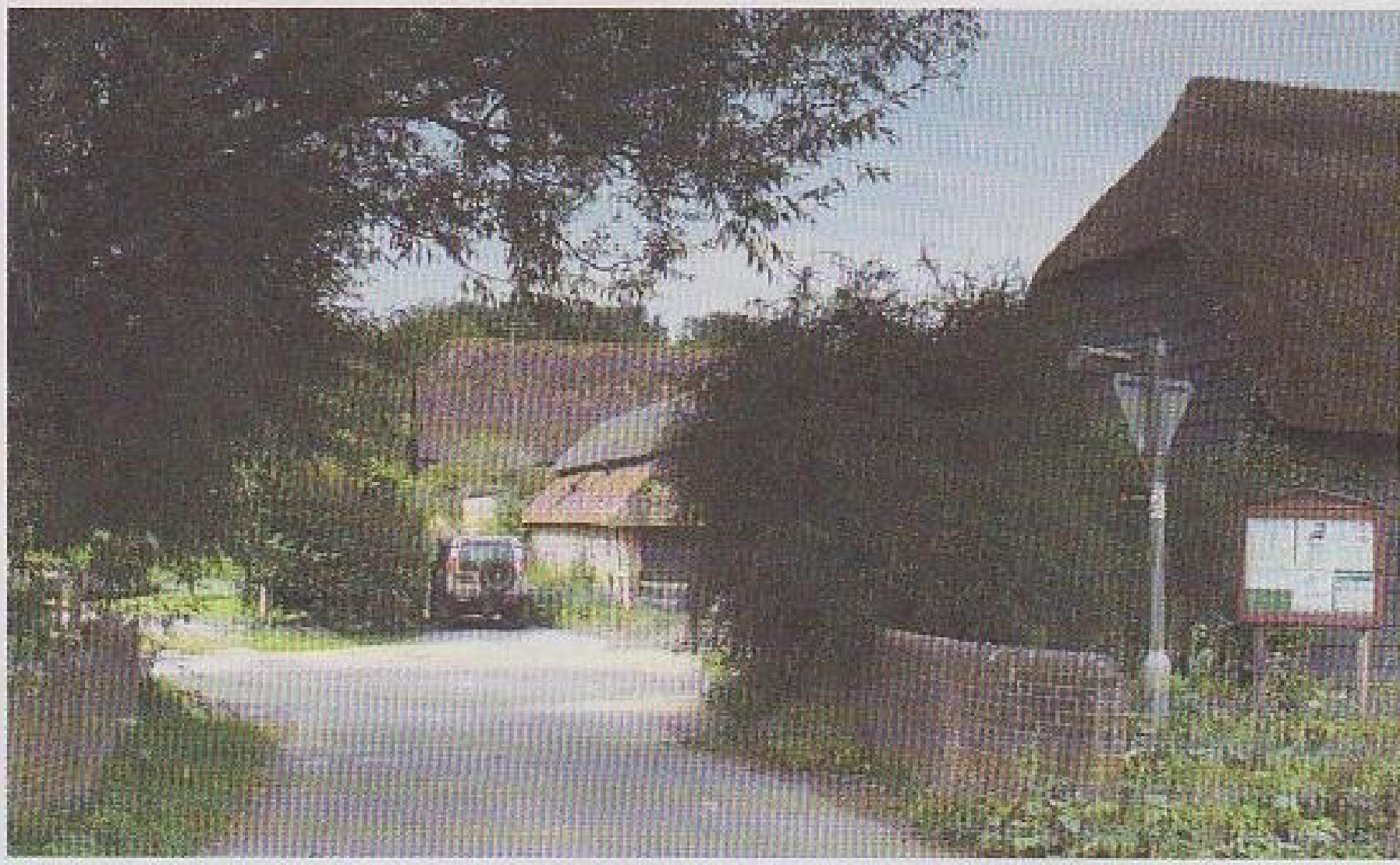
46

3.55

SU 345 773

Turn right over the bridge immediately after the footpath sign to the left





Step 47: Cross the bridge and take the narrow track between the farm buildings dead ahead

49 3.8		
50 5.0		
51 5.6		
52 6.8		

53 6.85		It's not clear which road has right of way
54 7.1		
55 7.2		ZERO TRIP
56 0.1		
57 1.1		SU 310 781 It's on a corner immediately after the Farncombe Farm buildings on the right. There's a byway sign, but you can't see it until you're right on the junction
58 1.65		





59 1.9			65 6.65		Dead slow – look out for kids playing
60 2.5		Dead slow through the farm	66 6.7		
61 3.3			67 6.75		
62 3.75		Swindon Cricklade 9 15	68 7.1		
63 5.0		SU 263 790 The track's not signed at all. It's in a wooded section once you've reached the top of the hill	69 7.25		Turn right on Oxford Street then park up outside the Crown at Aldbourne for the end of the route
64 6.5			Coming Up... Looking for an excuse to buy yourself a new set of panel beating hammers? Then all you need to do is join us in the woods overlooking the South Devon coast...		

